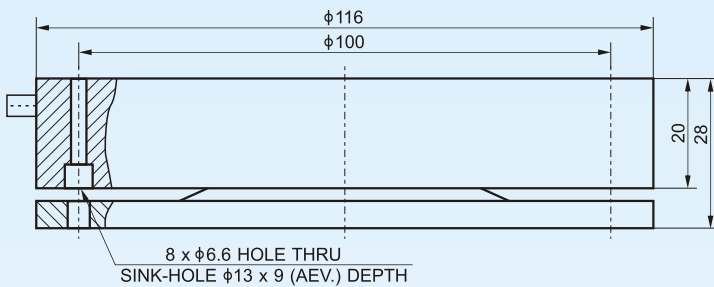


# Model 1310/1390 Shear-web Load Cells

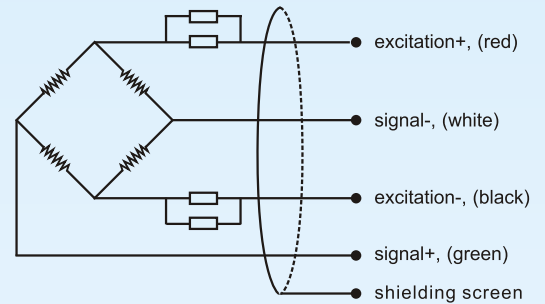


**type:** compression load cell  
**material:** alloy steel  
**surface:** nickel plated treatment  
**protection:** IP 66  
**application:** truck weighers and batching plant weighers

## Dimensions:



## Electrical connection:



## Specifications:

capacity	t	1, 2, 3, 5, 7.5
rated output	mV/V	2.0 ± 0.02
accuracy	%FSO	± 0.3
zero unbalance	%FSO	± 1.0
non-linearity	%FSO	± 0.3
hysteresis	%FSO	± 0.3
repeatability	%FSO	± 0.01
creep	%FSO/30min	± 0.02
temperature coefficient SPAN	%FSO/10°C	0.05
temperature coefficient ZERO	%FSO/10°C	0.3
input resistance	$\Omega$	780 ± 30
output resistance	$\Omega$	700 ± 10
insulation resistance	M $\Omega$	≥ 5000 @ 50 VDC
excitation recommended	V	9~12 DC/AC
maximum excitation	V	18 DC/AC
compensated temperature range	°C	-10 ~ +55
operating temperature range	°C	-35 ~ +65
safe overload	%FS	120
ultimate overload	%FS	150
cable length	m, shielded PVC cable	1.5 (Φ5 mm 4-wire)

The listed specifications are subject to change without prior notice.

**How to order:** model - capacity - output - accuracy - IP rating - cable length - customer specific requests  
**ordering code** example: 1310 - 2t - 2mV/V - 0.3%fso - IP 66 - 1.5m - no specific requests

**BCM SENSOR TECHNOLOGIES BVBA**