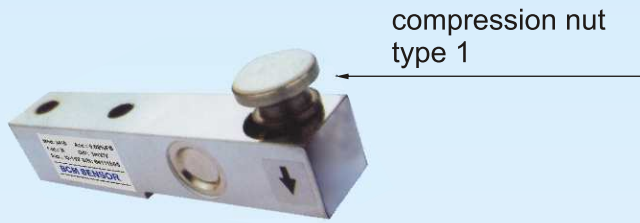


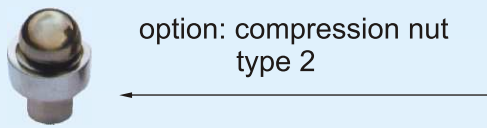
Model 3419/3499 Shear-beam Load Cells

Based on BCM advanced metal foil strain gauges technology, model 3419/3499 load cells are made of shear-beam working principle. These load cells are widely used in applications of platform-scales, hopper-scales weighing systems and process weighing, onboard vehicle weighing etc.

Model 3419/3499 load cells feature simple construction, excellent performance, easy installation and replacement. Thanks to BCM leading technology in sealing, these 34-series load cells can be made to a higher protection grade IP68, and fit to harsh industrial conditions.



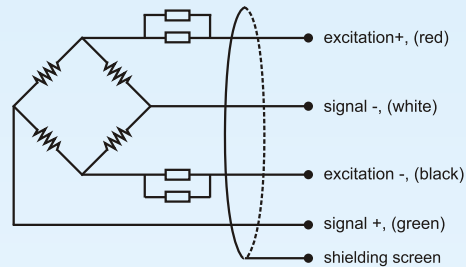
compression nut
type 1



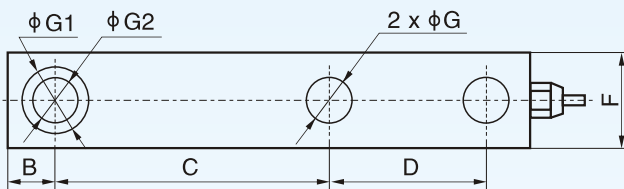
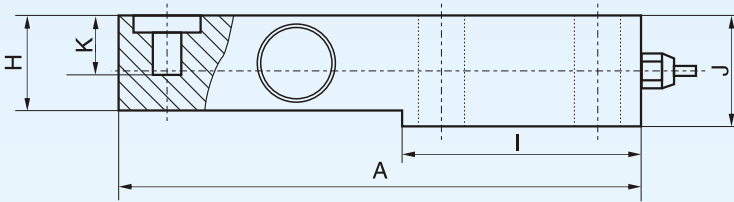
option: compression nut
type 2

- type:** single ended shear beam load cell
- material:** alloy steel (3419) / stainless steel (3499)
- surface:** nickel plated treatment (for 3419 only)
- protection:** IP 66, IP 67, or IP 68
- application:** hopper weighing, process weighing, and onboard vehicle weighing

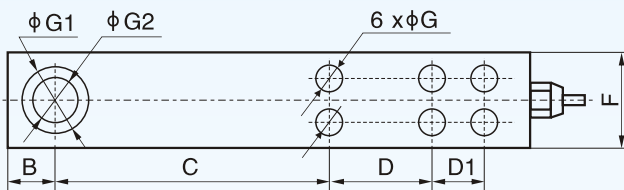
Electrical connection:



Dimensions:



(capacities : ≤ 20t)



(capacities : ≥ 30t)

Capacity	A	B	C	D	D1	F	G	G1	G2	H	I	J	K
0.5 ~ 2t	203	22	98	64	N.A.	37	13	32	16	37	95	43	30
3 ~ 5t	235	22	124	66	N.A.	48	21	38	22	48	110	52	30
10t	279	32	140	82	N.A.	60	28	48	32	60	133	67	20
20t	318	38	158	89	N.A.	70	34	54	38	70	153	82.5	24
30t	374	44.5	181	76	51	96	26	70	54	96	189	115	32
50t	416	48	196	92	56	105	29	86	60	106	210	143	32

BCM SENSOR TECHNOLOGIES BVBA

Model 3419/3499

Shear-beam Load Cells



Specifications:

capacity	t	0.5, 1, 2, 3, 5, 10, 20, 30, 50	
rated output	mV/V	2.0 ± 0.02	
accuracy	%FSO	± 0.02	± 0.03
zero unbalance	%FSO	± 1.0	± 1.0
non-linearity	%FSO	± 0.02	± 0.03
hysteresis	%FSO	± 0.02	± 0.03
repeatability	%FSO	± 0.01	± 0.01
creep	%FSO/30min	± 0.02	± 0.03
temperature coefficient of SPAN	%FSO/10°C	0.02	
temperature coefficient of ZERO	%FSO/10°C	0.03	
input resistance	Ω	360 ± 10	
output resistance	Ω	350 ± 10	
insulation resistance	MΩ	≥ 5000@50 VDC	
excitation recommended	V	10 DC/AC	
maximum excitation	V	15 DC/AC	
compensated temperature range	°C	-10 ~ +55	
operating temperature range	°C	-35 ~ +80 (option: -35 ~ +150)	
safe overload	%FS	150	
ultimate overload	%FS	200	
cable length	m, shield PVC cable	3.5(0.5~3t); 8(5t); 13(10~50t). Φ 5.7 mm 4-wire	

The listed specifications are subject to change without prior notice.

How to order: model - capacity - output - accuracy - IP rating - cable length - nut & type - customer specific requests
ordering code example: 3419 - 20t - 2mV/V - 0.03%fso - IP 67 - 13m - need nut type 1 - no specific requests

BCM SENSOR TECHNOLOGIES BVBA

Industriepark, Brechtsebaan 2
B-2900 Schoten - Antwerpen, BELGIUM

Tel.: +32-3-238 6469
Fax: +32-3-238 4171

website: www.bcmsensor.com
email: sales@bcmsensor.com