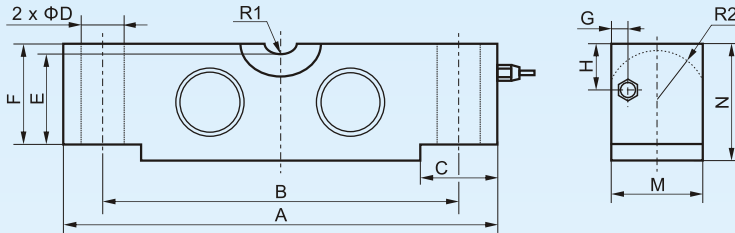


Model 4516/4596 Double-ended Shear Beam Load Cells



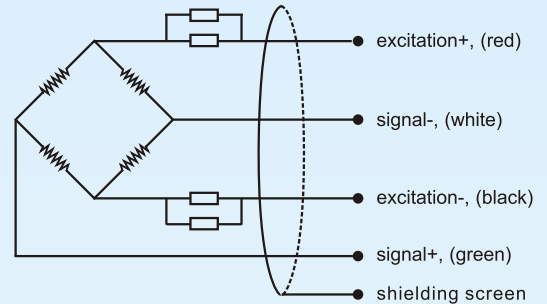
type: double-ended shear beam load cell
material: 4516: alloy steel
 4596: 17-4PH stainless steel
surface: nickel plated treatment (for 4516 only)
protection: IP 66, IP 67, or IP 68 (laser welded sealing)
application: catalyst vessels, batching plant and truck weighers

Dimensions:



cap. (Klb)	A	B	C	D	E	F	G	H	M	N	R1	R2
10, 25	196.9	165.1	35.9	17.3	41.4	43.2	8.8	13.6	42.9	49.3	19.1	22.9
40	260.4	215.9	49.0	20.6	50.8	53.3	9.0	31.0	49.3	62.0	25.1	28.5
50, 75	260.4	215.9	49.0	27.0	64.5	67.3	10.0	37.4	62.0	74.7	25.4	34.8
100, 125	387.4	323.8	79.5	41.0	83.8	87.1	12.0	43.6	73.6	98.0	38.1	45.7
150, 200	489.0	387.4	101.6	41.0	112.8	130.0	12.0	73.6	96.5	147.3	50.8	60.2

Electrical connection:



Specifications:

capacity	klb	10, 25, 40, 50, 75, 100, 125, 150, 200
rated output	mV/V	3.0 ± 0.004
accuracy	%FSO	± 0.03
zero unbalance	%FSO	± 1.0
non-linearity	%FSO	± 0.03
hysteresis	%FSO	± 0.03
repeatability	%FSO	± 0.03
creep	%FSO/30min	± 0.03
temperature coefficient of SPAN	%FSO/10°C	0.03
temperature coefficient of ZERO	%FSO/10°C	0.03
input resistance	Ω	750 ± 10
output resistance	Ω	700 ± 10
insulation resistance	M	≥ 5000@50 VDC
excitation recommended	Vdc	10~12
maximum excitation	Vdc	15
compensated temperature range	°C	-10 ~ +40
operating temperature range	°C	-30 ~ +70
safe overload	%FS	150
ultimate overload	%FS	200
cable length	m, shielded PVC cable	13 (Φ5 mm 4-wire)

The listed specifications are subject to change without prior notice.

How to order: model - capacity - output - accuracy - IP rating - cable length - customer specific requests
ordering code example: 4596 - 50klb - 3mV/V - 0.03%fso - IP 68 - 13m - no specific requests

BCM SENSOR TECHNOLOGIES BVBA